



**CORRECTIONS MEDICINE**  
**Organizational Structure**  
**ACA Standard: 4 ALDF – 7D – 04**

Effective: September 2011

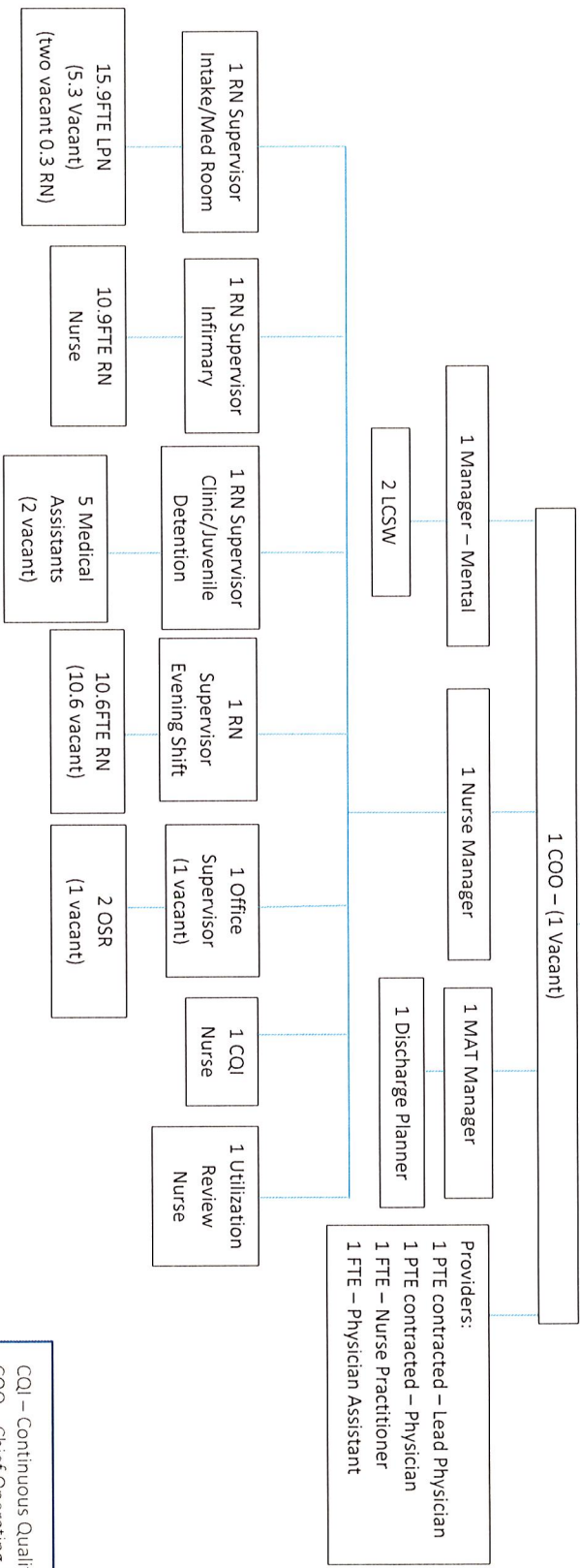
Revised: May 2015, May 2019, August 2019

Reviewed: June 2013, Apr 2016, Apr 2017, Apr 2018

Policy Number:  
CM – 22.3

- I. **PURPOSE:** To provide a clear and concise line of communication through a chain of command for the Corrections Medicine staff.
- II. **POLICY:** The Saint Louis County Department of Public Health (DPH) Corrections Medicine program has an organizational chart that reflects the current structure of authority, responsibility and accountability. Corrections Medicine staff are expected to follow the appropriate chain of command.
- III. **RESPONSIBILITY:** All Corrections Medicine staff are responsible for the content of this policy and procedure as well as adherence to the policy.
- IV. **PROCEDURE:**
  1. The Corrections Medicine organization chart depicts the functional areas and lines of responsibility. The organizational chart is updated as needed.

Director of Department of Public Health  
Director of Public Health and Primary Care Integration  
Director of Corrections Medicine



CQI – Continuous Quality Improvement  
COO – Chief Operating Officer  
DPH – Department of Public Health  
FTE – Full Time Employment  
LCSW – Licensed Clinical Social Worker  
LPN – Licensed Practical Nurse  
MAT – Medication Assisted Treatment  
OSR – Office Services Representative  
PTE – Part Time Employment  
RN – Registered Nurse